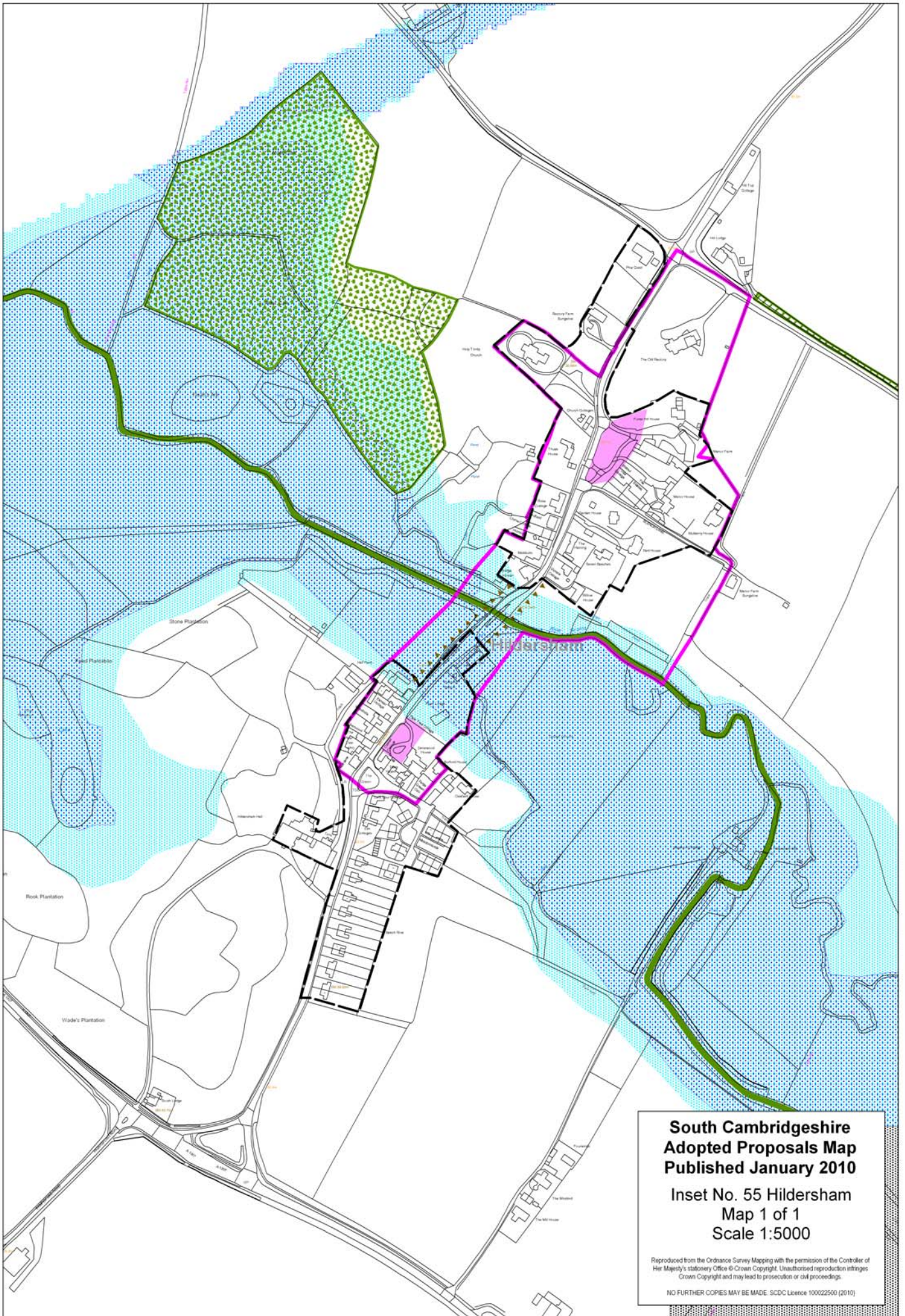


**South Cambridgeshire
Adopted Proposals Map
Published January 2010**

**Inset No. 54 Heydon
Map 1 of 1
Scale 1:5000**

Reproduced from the Ordnance Survey Mapping with the permission of the Controller of Her Majesty's Stationery Office © Crown Copyright. Unauthorised reproduction infringes Crown Copyright and may lead to prosecution or civil proceedings.



**South Cambridgeshire
Adopted Proposals Map
Published January 2010**

**Inset No. 55 Hildersham
Map 1 of 1
Scale 1:5000**

Reproduced from the Ordnance Survey Mapping with the permission of the Controller of Her Majesty's Stationery Office © Crown Copyright. Unauthorised reproduction infringes Crown Copyright and may lead to prosecution or civil proceedings.

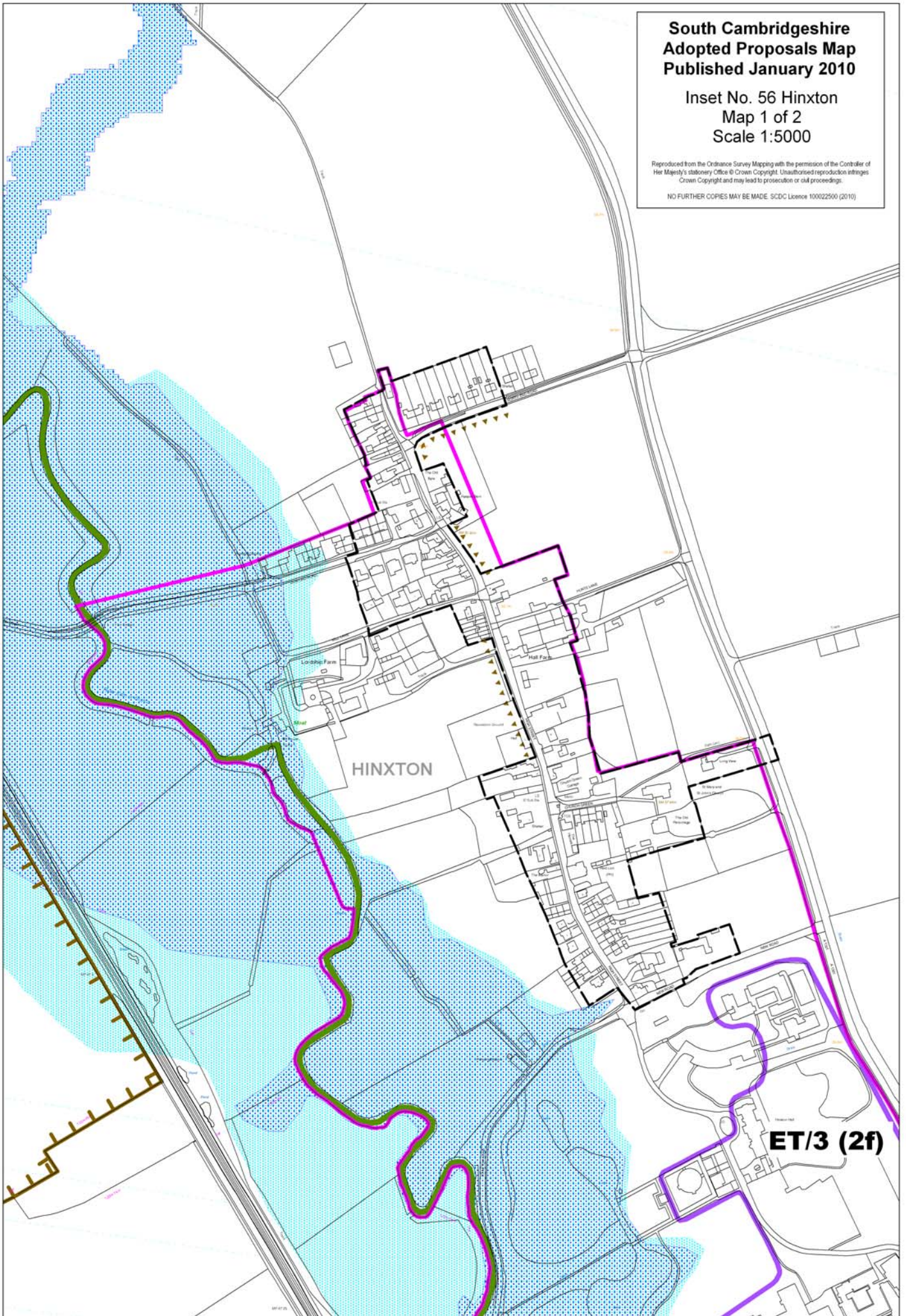
NO FURTHER COPIES MAY BE MADE. SCDC Licence 100022500 (2010)

**South Cambridgeshire
Adopted Proposals Map
Published January 2010**

**Inset No. 56 Hinxtton
Map 1 of 2
Scale 1:5000**

Reproduced from the Ordnance Survey Mapping with the permission of the Controller of Her Majesty's Stationery Office © Crown Copyright. Unauthorised reproduction infringes Crown Copyright and may lead to prosecution or civil proceedings.

NO FURTHER COPIES MAY BE MADE. SCDL Licence 100022500 (2010)



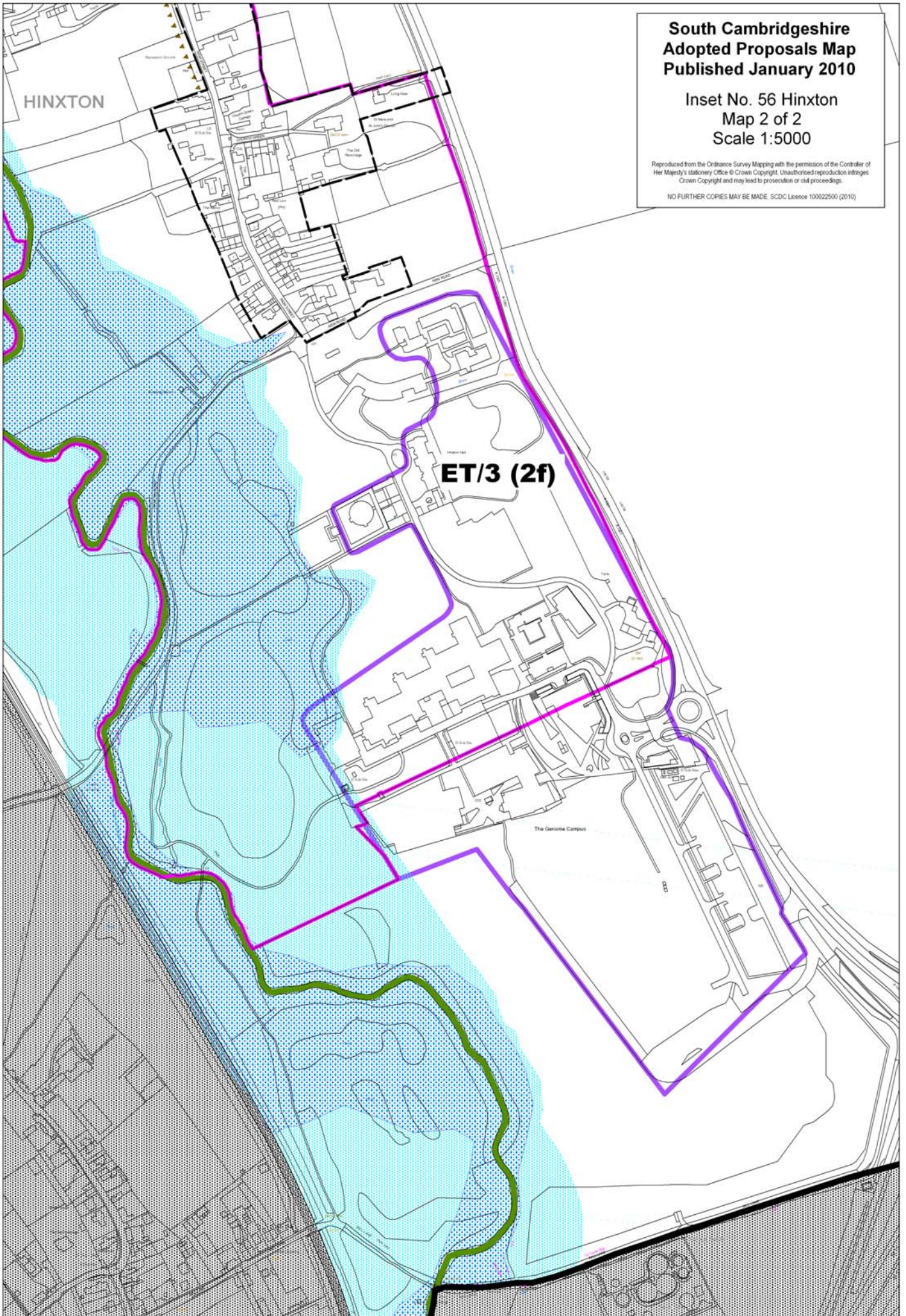
ET/3 (2f)

**South Cambridgeshire
Adopted Proposals Map
Published January 2010**

**Inset No. 56 Hinxtton
Map 2 of 2
Scale 1:5000**

Reproduced from the Ordnance Survey Mapping with the permission of the Controller of Her Majesty's Stationery Office © Crown Copyright. Unauthorised reproduction infringes Crown Copyright and may lead to prosecution or civil proceedings.

NO FURTHER COPIES MAY BE MADE. SDCDC Licence 100022500 (2010)

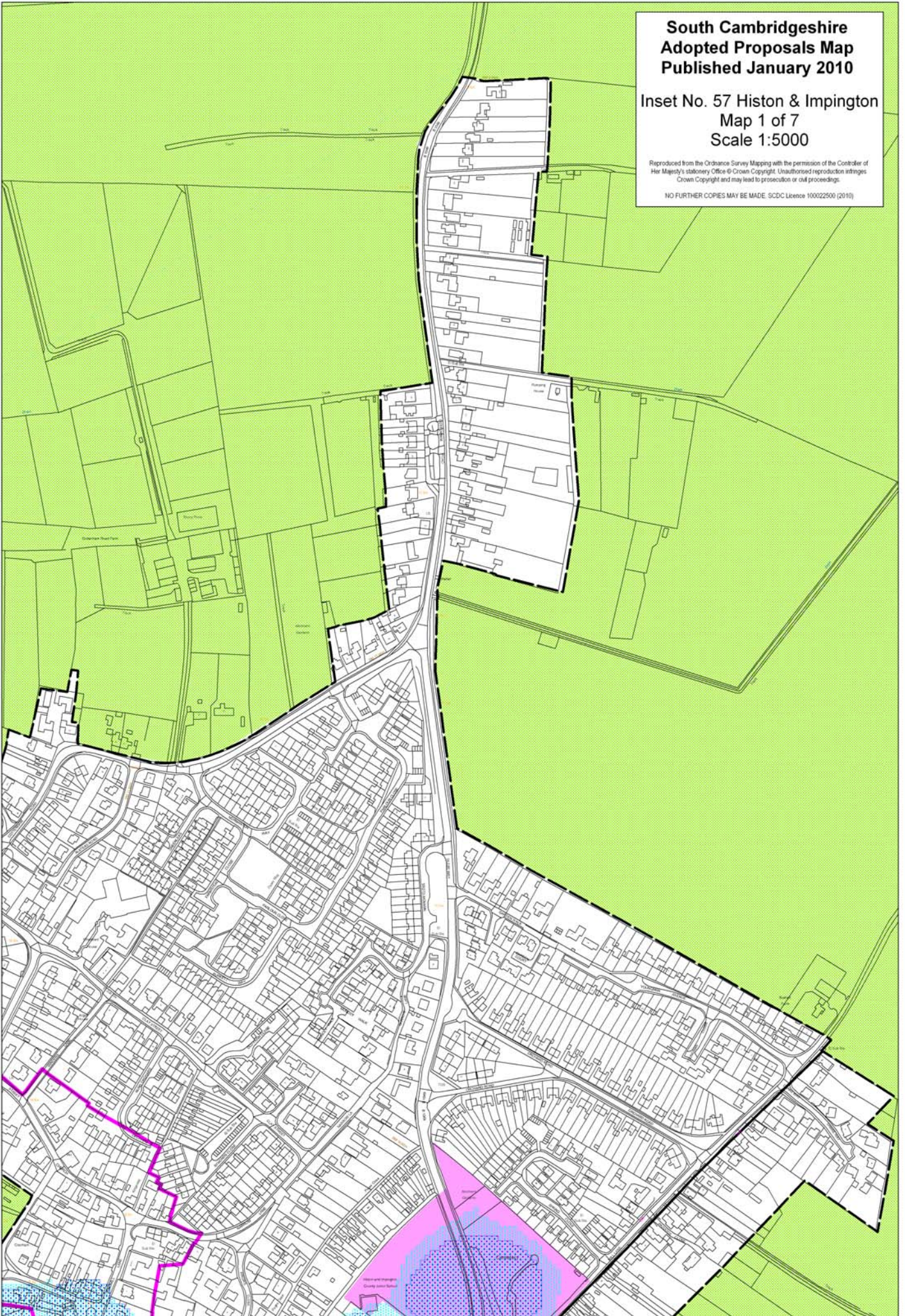


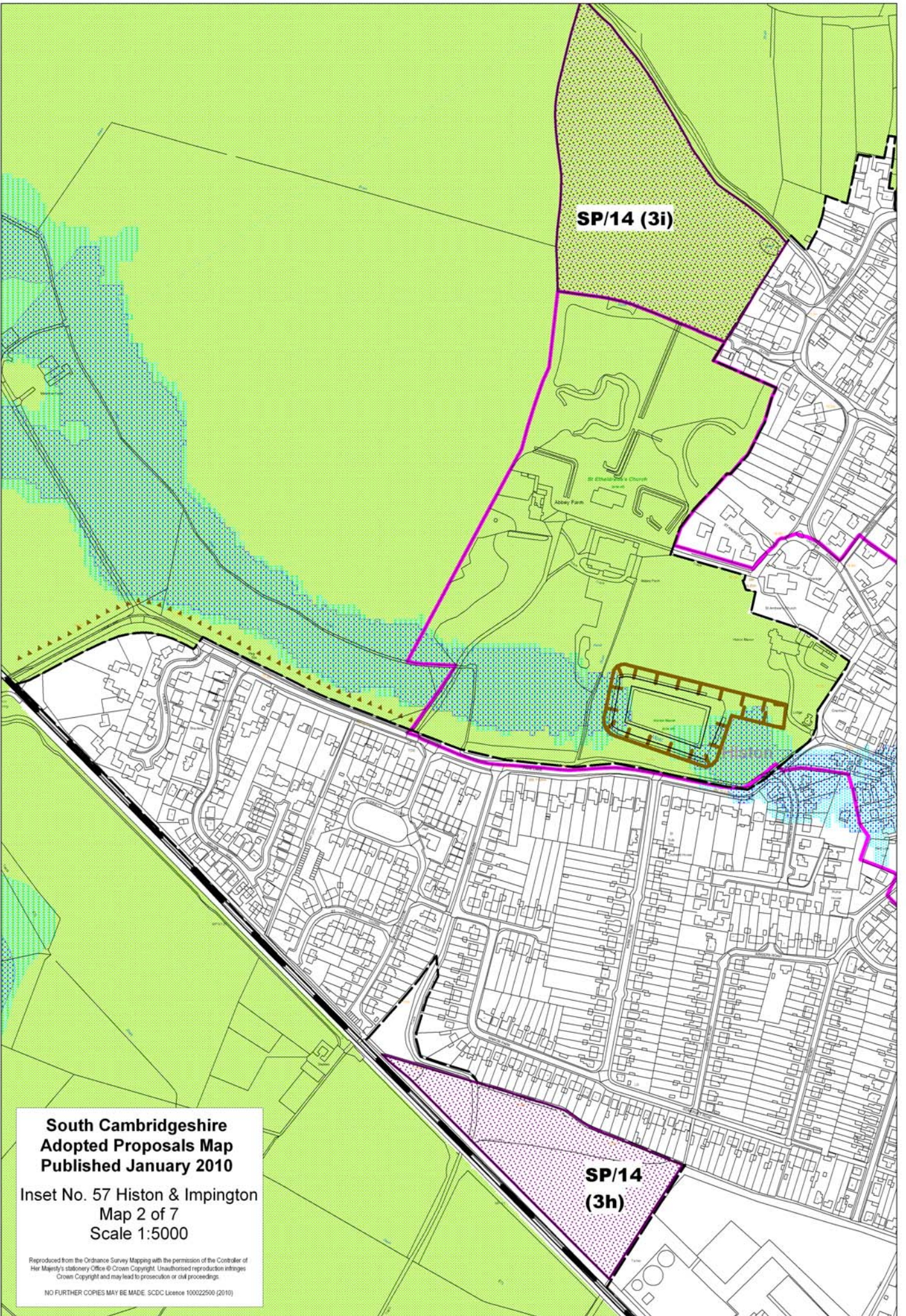
**South Cambridgeshire
Adopted Proposals Map
Published January 2010**

**Inset No. 57 Histon & Impington
Map 1 of 7
Scale 1:5000**

Reproduced from the Ordnance Survey Mapping with the permission of the Controller of Her Majesty's Stationery Office © Crown Copyright. Unauthorised reproduction infringes Crown Copyright and may lead to prosecution or civil proceedings.

NO FURTHER COPIES MAY BE MADE. SCDC Licence 100022500 (2010)



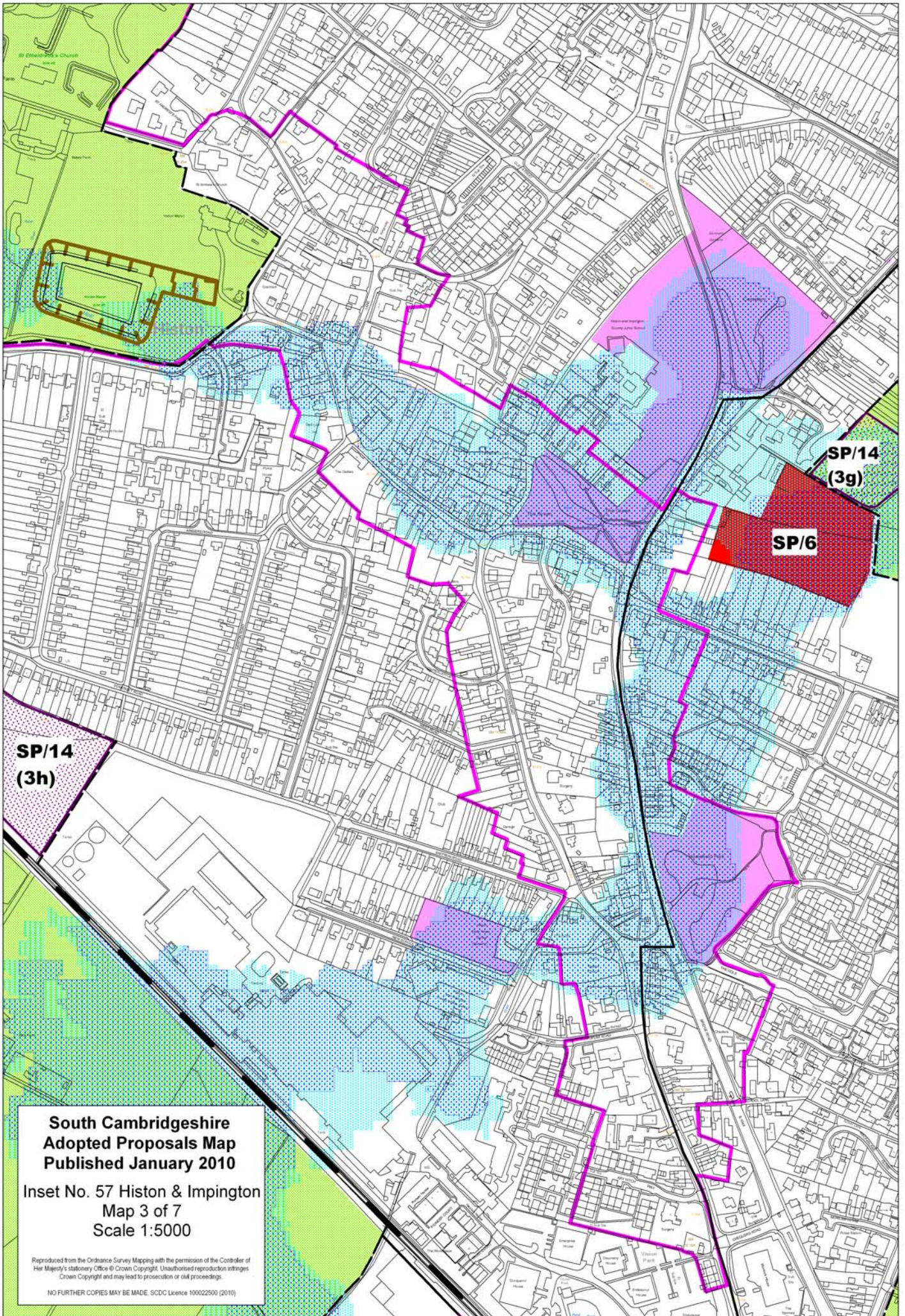


**South Cambridgeshire
Adopted Proposals Map
Published January 2010**

Inset No. 57 Histon & Impington
Map 2 of 7
Scale 1:5000

Reproduced from the Ordnance Survey Mapping with the permission of the Controller of Her Majesty's Stationery Office © Crown Copyright. Unauthorised reproduction infringes Crown Copyright and may lead to prosecution or civil proceedings.

NO FURTHER COPIES MAY BE MADE. SCDC Licence 100022500 (2010)



**SP/14
(3h)**

**SP/14
(3g)**

SP/6

**South Cambridgeshire
Adopted Proposals Map
Published January 2010**

Inset No. 57 Histon & Impington
Map 3 of 7
Scale 1:5000

Reproduced from the Ordnance Survey Mapping with the permission of the Controller of Her Majesty's Stationery Office © Crown Copyright. Unauthorised reproduction infringes Crown Copyright and may lead to prosecution or civil proceedings.

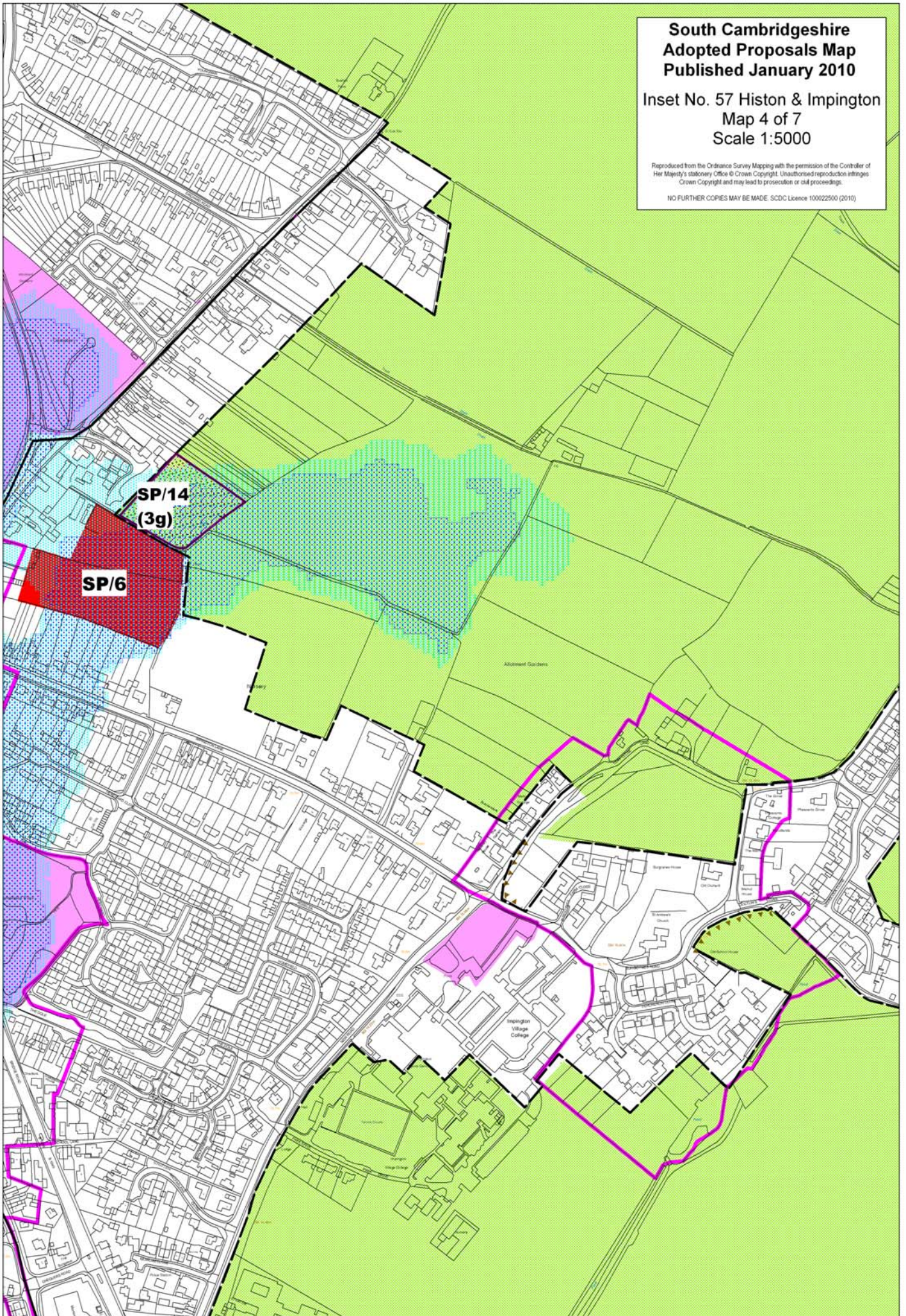
NO FURTHER COPIES MAY BE MADE. SDCDC Licence 100022500 (2010)

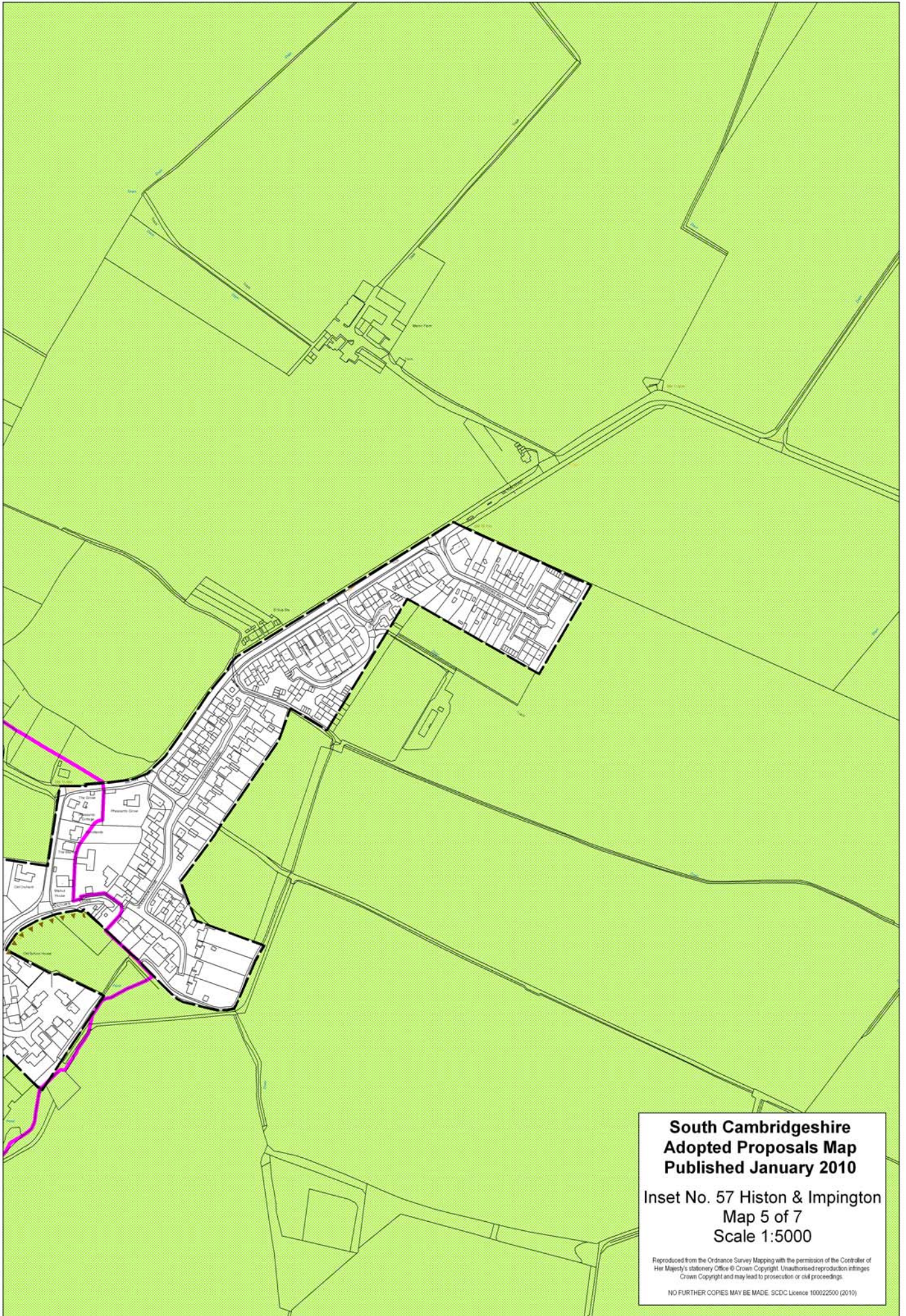
**South Cambridgeshire
Adopted Proposals Map
Published January 2010**

**Inset No. 57 Histon & Impington
Map 4 of 7
Scale 1:5000**

Reproduced from the Ordnance Survey Mapping with the permission of the Controller of Her Majesty's Stationery Office © Crown Copyright. Unauthorised reproduction infringes Crown Copyright and may lead to prosecution or civil proceedings.

NO FURTHER COPIES MAY BE MADE. SDCDC Licence 100022500 (2010)



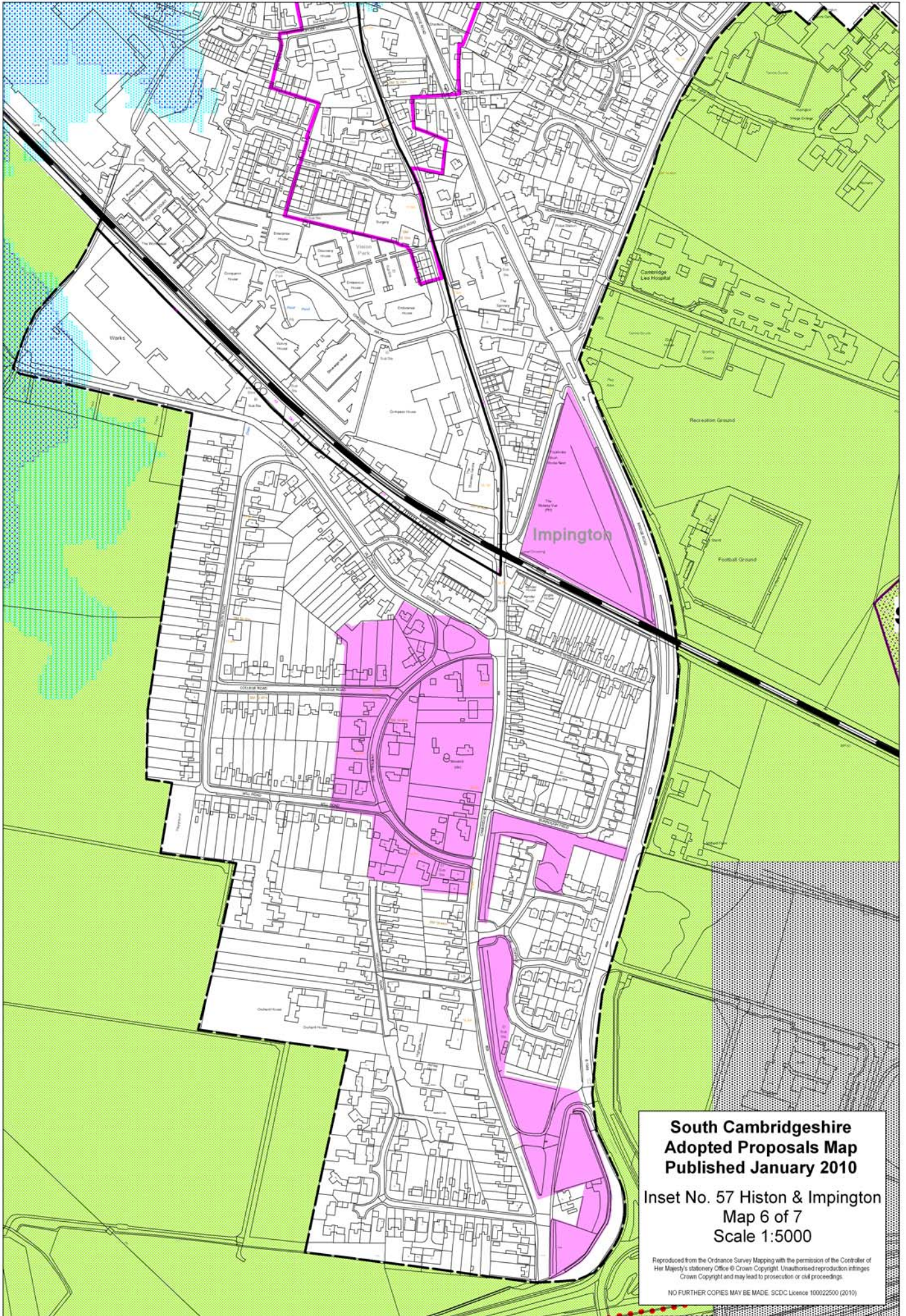


**South Cambridgeshire
Adopted Proposals Map
Published January 2010**

**Inset No. 57 Histon & Impington
Map 5 of 7
Scale 1:5000**

Reproduced from the Ordnance Survey Mapping with the permission of the Controller of Her Majesty's Stationery Office © Crown Copyright. Unauthorised reproduction infringes Crown Copyright and may lead to prosecution or civil proceedings.

NO FURTHER COPIES MAY BE MADE. SDC Licence 100022500 (2010)

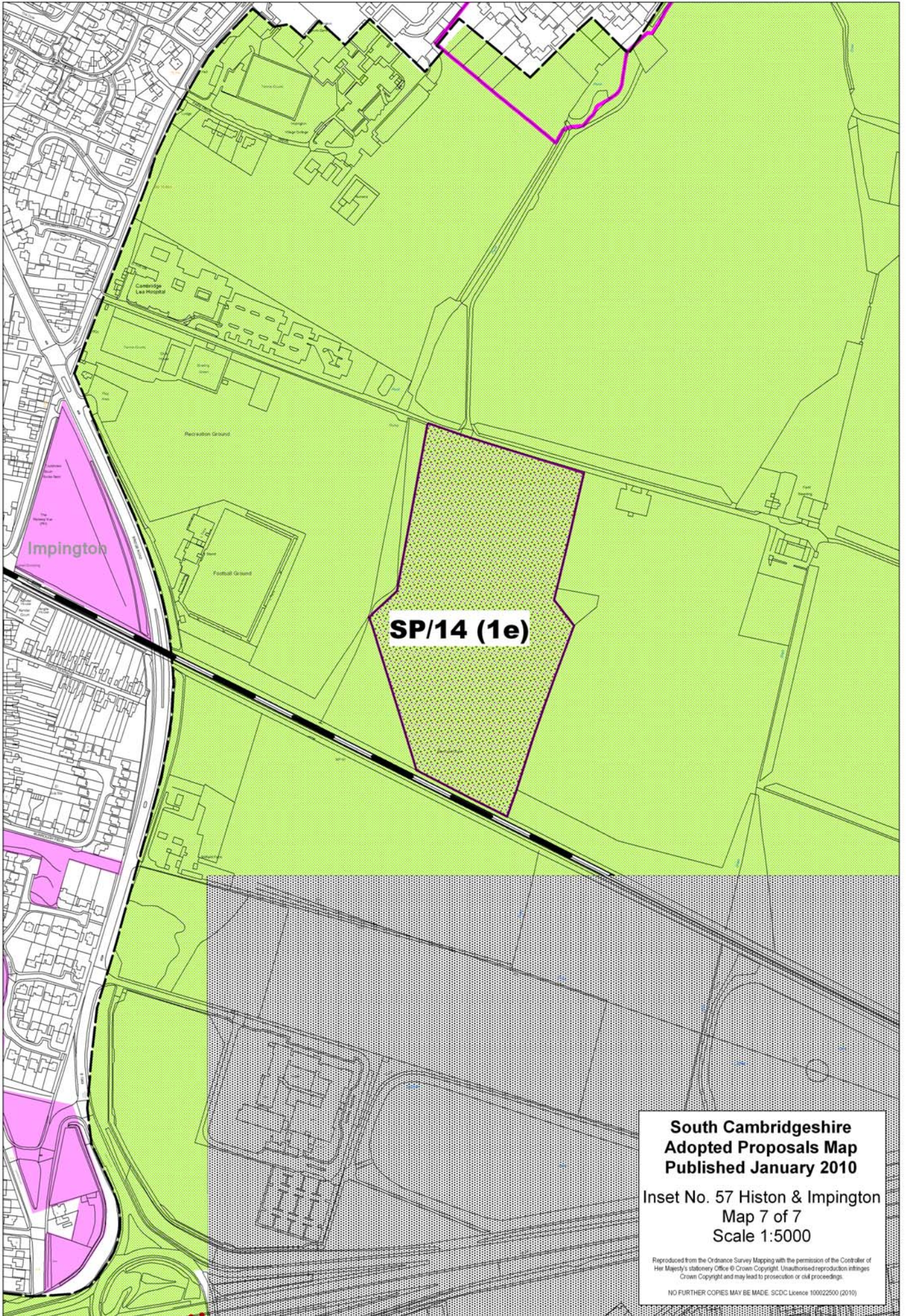


**South Cambridgeshire
Adopted Proposals Map
Published January 2010**

**Inset No. 57 Histon & Impington
Map 6 of 7
Scale 1:5000**

Reproduced from the Ordnance Survey Mapping with the permission of the Controller of Her Majesty's Stationery Office © Crown Copyright. Unauthorised reproduction infringes Crown Copyright and may lead to prosecution or civil proceedings.

NO FURTHER COPIES MAY BE MADE. SDC Licence 100022500 (2010)



SP/14 (1e)

Impington

Cambridge Lea Hospital

Recreation Ground

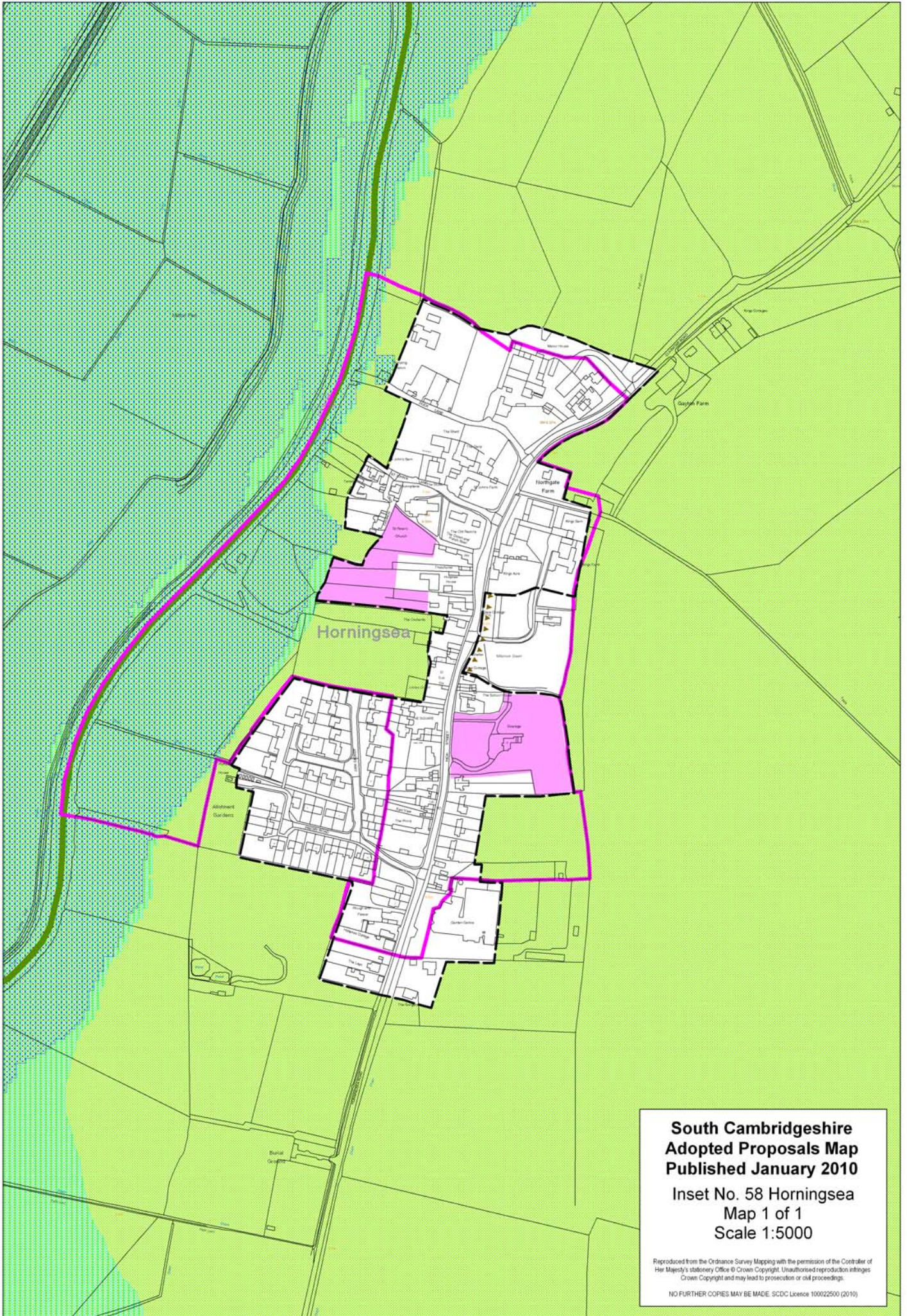
Football Ground

**South Cambridgeshire
Adopted Proposals Map
Published January 2010**

**Inset No. 57 Histon & Impington
Map 7 of 7
Scale 1:5000**

Reproduced from the Ordnance Survey Mapping with the permission of the Controller of Her Majesty's Stationery Office © Crown Copyright. Unauthorised reproduction infringes Crown Copyright and may lead to prosecution or civil proceedings.

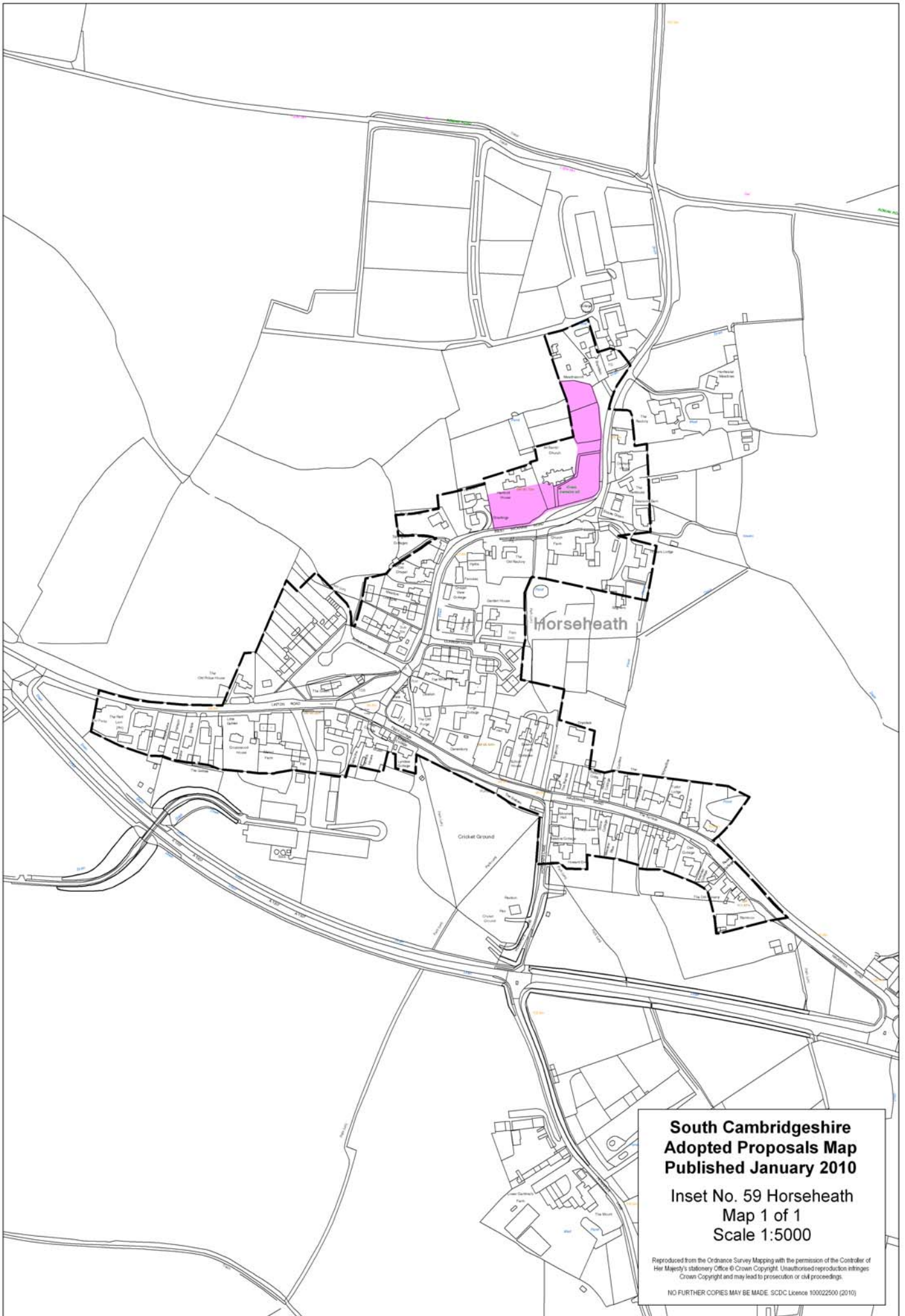
NO FURTHER COPIES MAY BE MADE. SDCD Licence 100022500 (2010)



**South Cambridgeshire
Adopted Proposals Map
Published January 2010**

**Inset No. 58 Horningsea
Map 1 of 1
Scale 1:5000**

Reproduced from the Ordnance Survey Mapping with the permission of the Controller of Her Majesty's Stationery Office © Crown Copyright. Unauthorised reproduction infringes Crown Copyright and may lead to prosecution or civil proceedings.
NO FURTHER COPIES MAY BE MADE. SDC Licence 100022500 (2010)



**South Cambridgeshire
Adopted Proposals Map
Published January 2010**

**Inset No. 59 Horseheath
Map 1 of 1
Scale 1:5000**

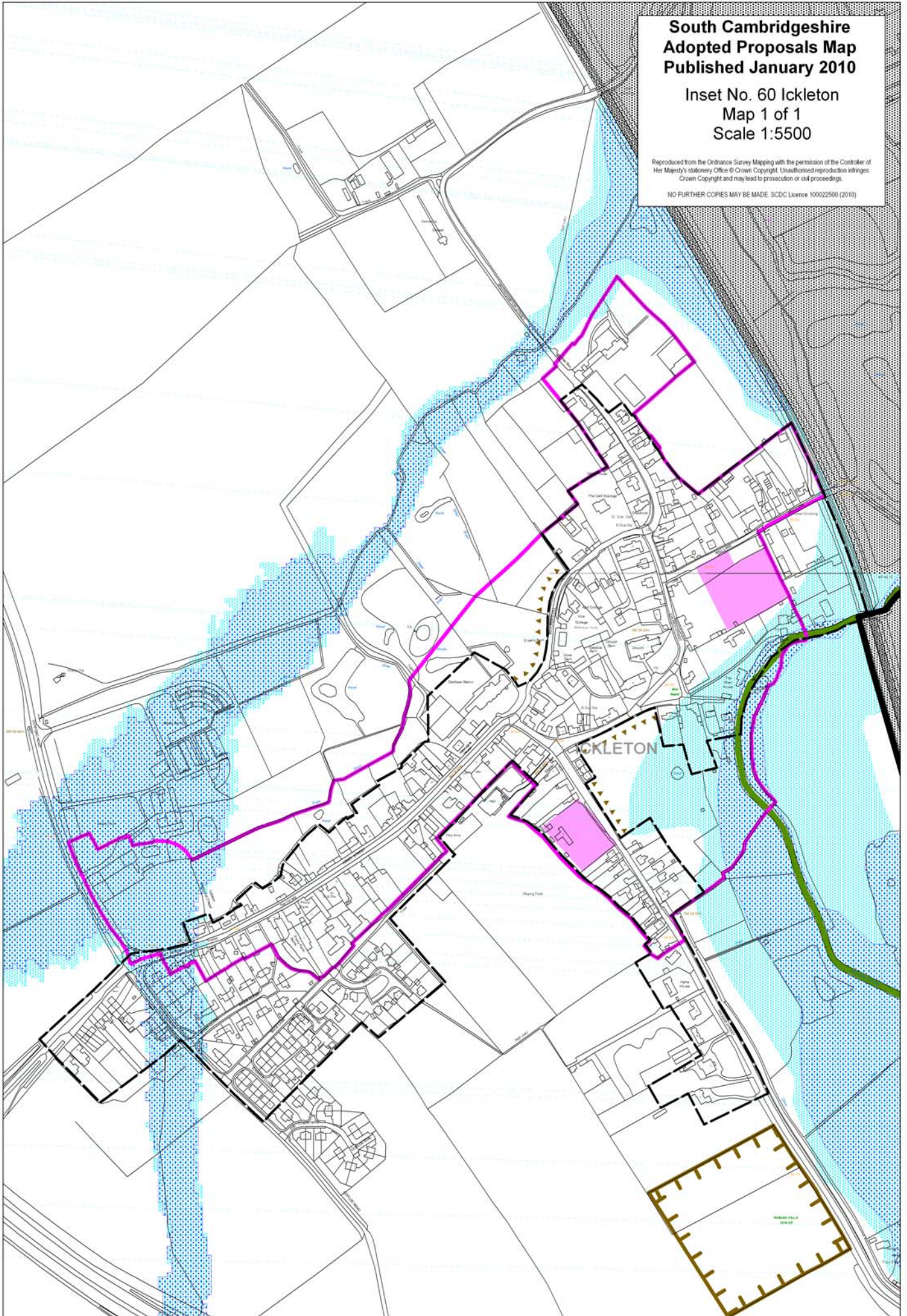
Reproduced from the Ordnance Survey Mapping with the permission of the Controller of Her Majesty's Stationery Office © Crown Copyright. Unauthorised reproduction infringes Crown Copyright and may lead to prosecution or civil proceedings.
NO FURTHER COPIES MAY BE MADE. SCDC Licence 100022500 (2010)

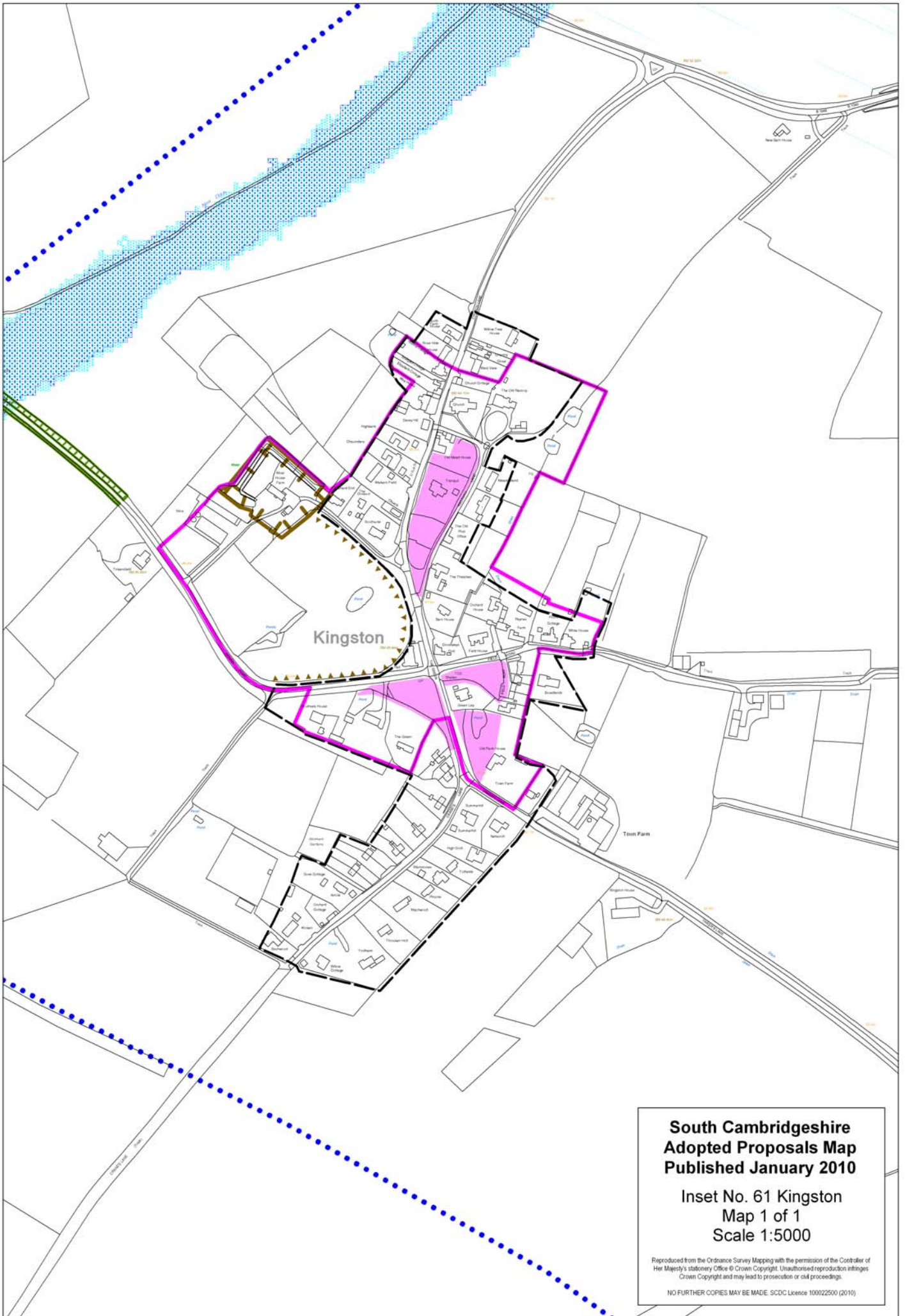
**South Cambridgeshire
Adopted Proposals Map
Published January 2010**

**Inset No. 60 Ickleton
Map 1 of 1
Scale 1:5500**

Reproduced from the Ordnance Survey Mapping with the permission of the Controller of Her Majesty's Stationery Office © Crown Copyright. Unauthorised reproduction infringes Crown Copyright and may lead to prosecution or civil proceedings.

NO FURTHER COPIES MAY BE MADE. SCDC Licence 100022500 (2010)



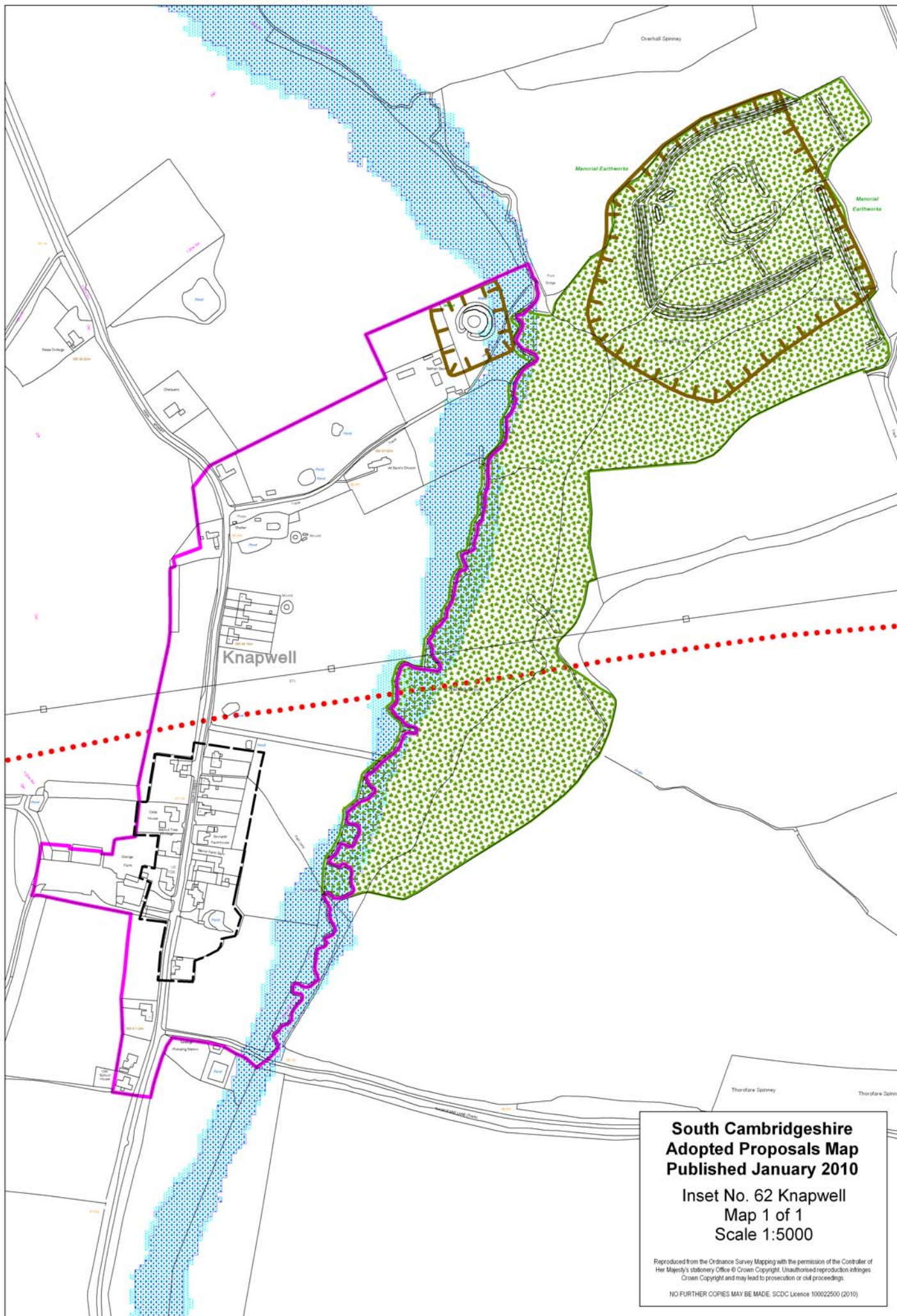


**South Cambridgeshire
Adopted Proposals Map
Published January 2010**

**Inset No. 61 Kingston
Map 1 of 1
Scale 1:5000**

Reproduced from the Ordnance Survey Mapping with the permission of the Controller of Her Majesty's Stationery Office © Crown Copyright. Unauthorised reproduction infringes Crown Copyright and may lead to prosecution or civil proceedings.

NO FURTHER COPIES MAY BE MADE. SDC Licence 100022500 (2010)





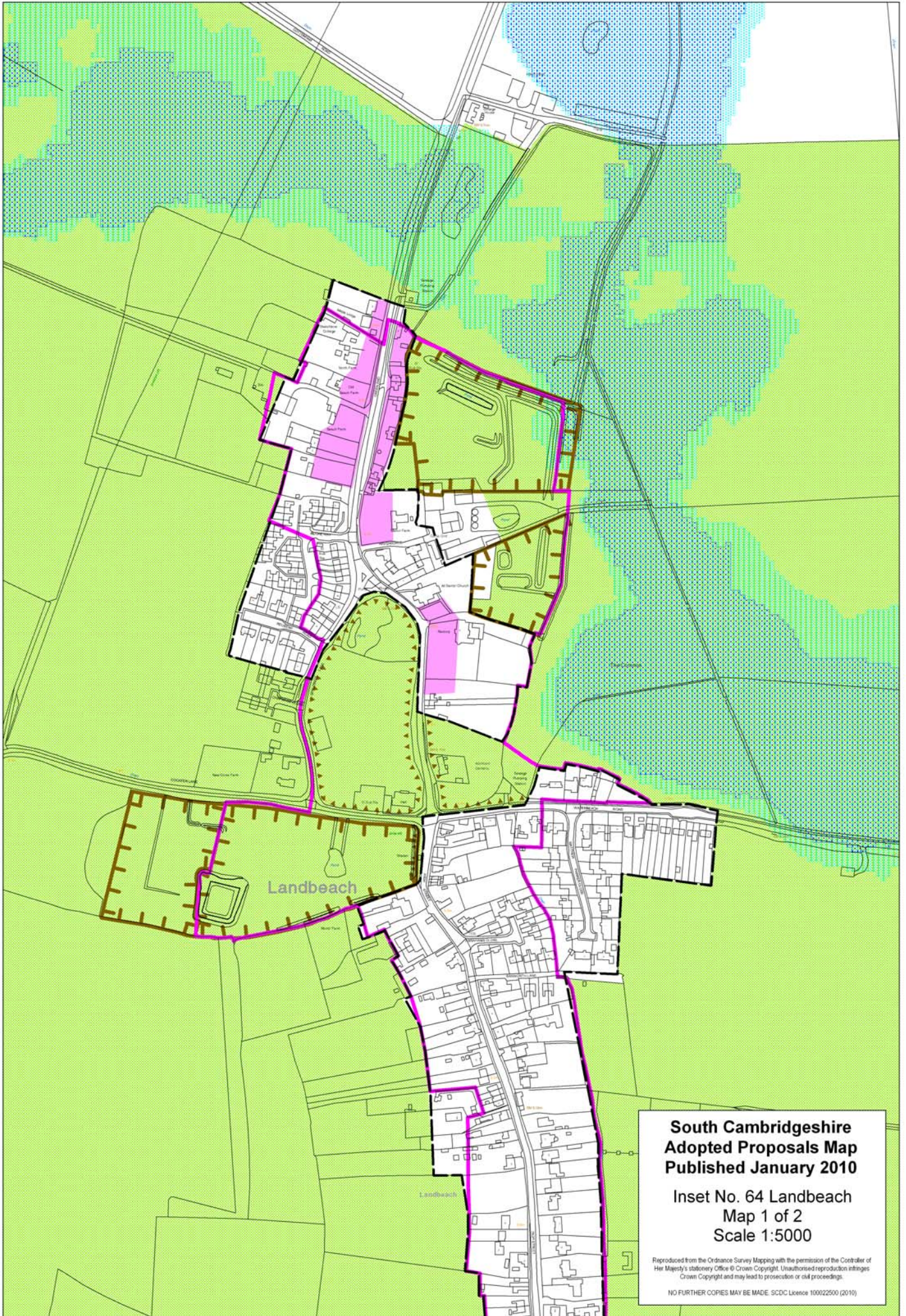
Basingbourn

**South Cambridgeshire
Adopted Proposals Map
Published January 2010**

**Inset No. 63 Kneesworth
Map 1 of 1
Scale 1:5000**

Reproduced from the Ordnance Survey Mapping with the permission of the Controller of Her Majesty's Stationery Office © Crown Copyright. Unauthorised reproduction infringes Crown Copyright and may lead to prosecution or civil proceedings.

NO FURTHER COPIES MAY BE MADE. SDCDC Licence 100022500 (2010)



**South Cambridgeshire
Adopted Proposals Map
Published January 2010**

**Inset No. 64 Landbeach
Map 1 of 2
Scale 1:5000**

Reproduced from the Ordnance Survey Mapping with the permission of the Controller of Her Majesty's Stationery Office © Crown Copyright. Unauthorised reproduction infringes Crown Copyright and may lead to prosecution or civil proceedings.

NO FURTHER COPIES MAY BE MADE. SCDC Licence 100022500 (2010)

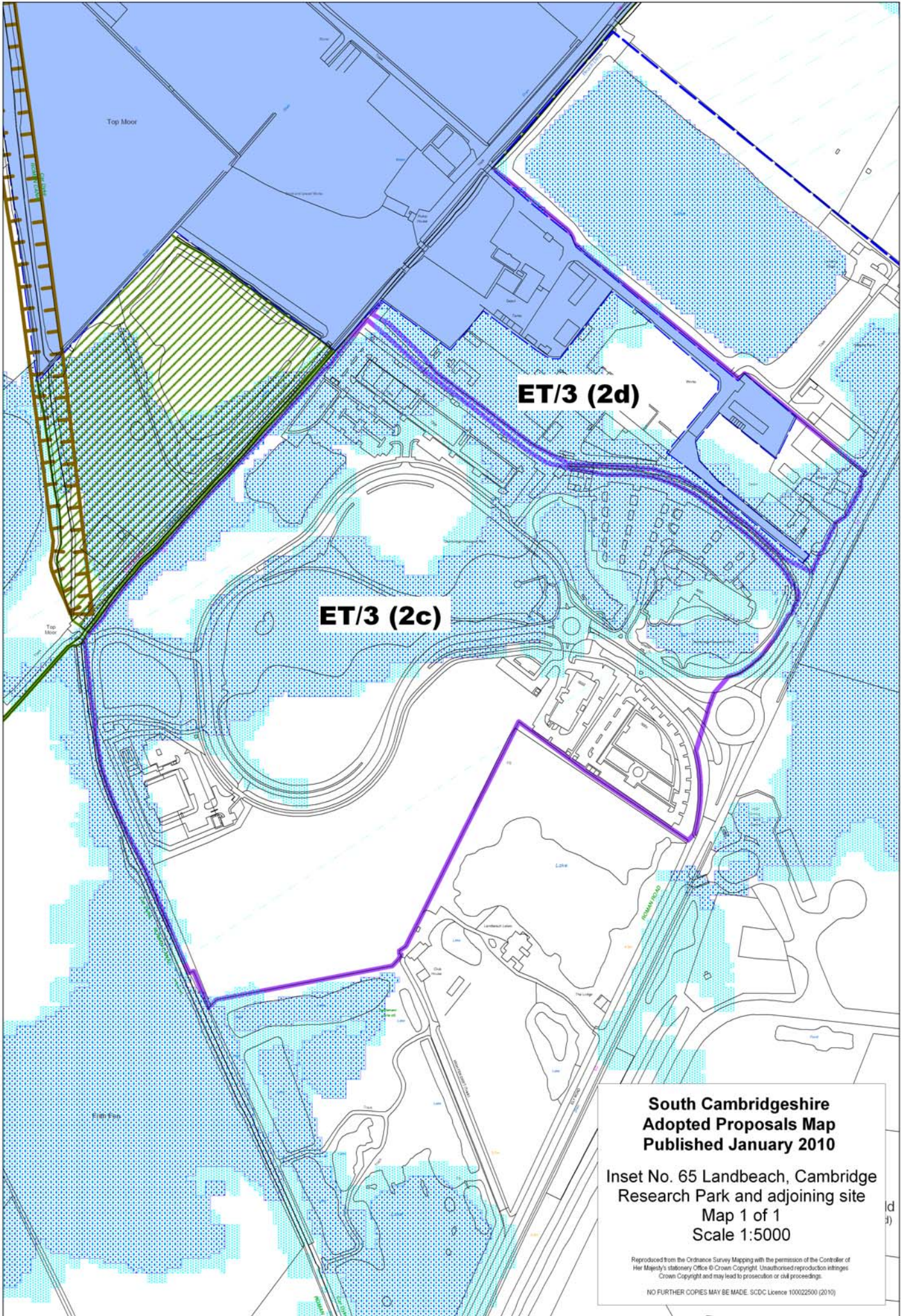


**South Cambridgeshire
Adopted Proposals Map
Published January 2010**

**Inset No. 64 Landbeach
Map 2 of 2
Scale 1:5000**

Reproduced from the Ordnance Survey Mapping with the permission of the Controller of Her Majesty's Stationery Office © Crown Copyright. Unauthorised reproduction infringes Crown Copyright and may lead to prosecution or civil proceedings.

NO FURTHER COPIES MAY BE MADE. SCDC Licence 100022500 (2010)



Top Moor

ET/3 (2d)

ET/3 (2c)

Top Moor

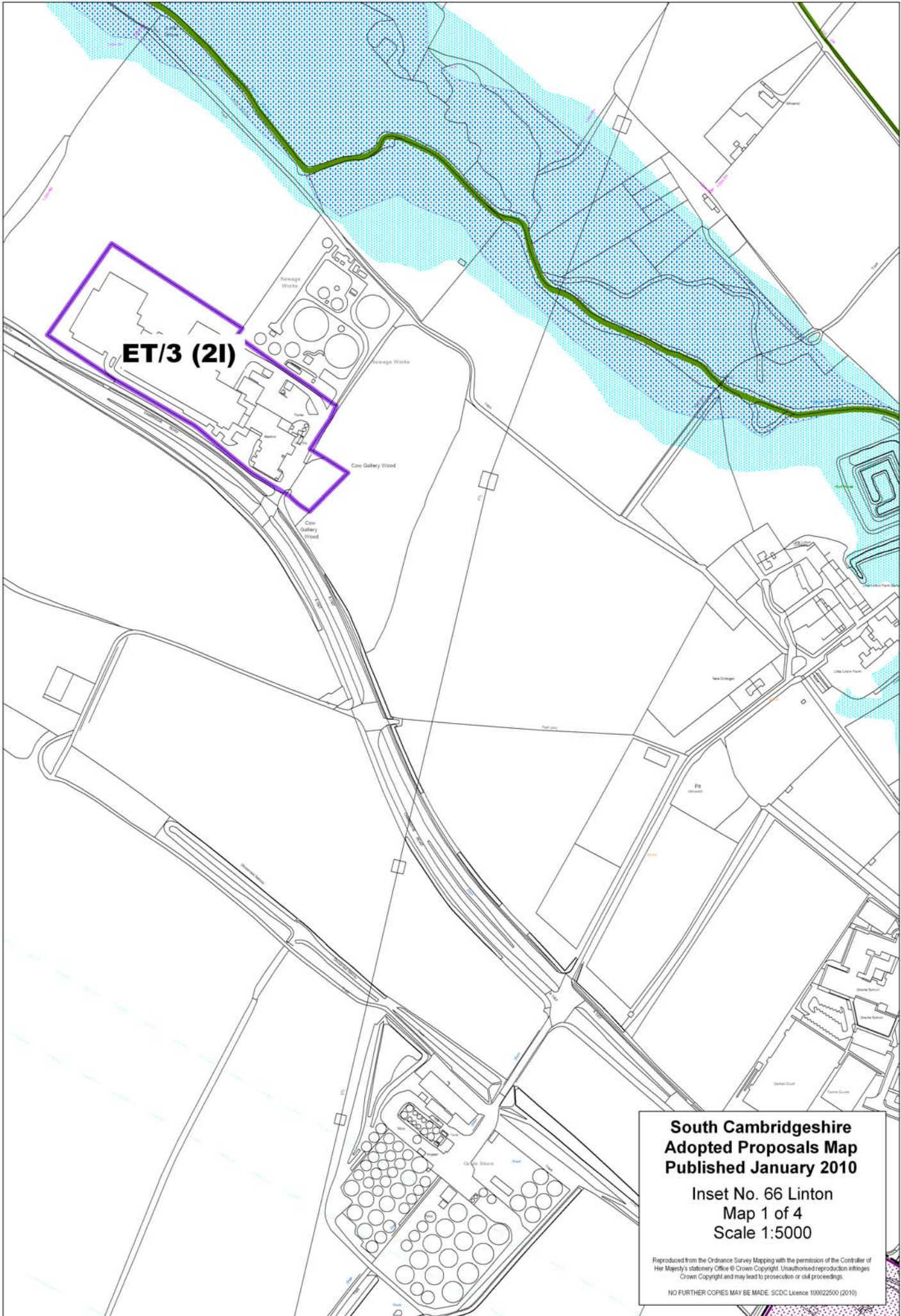
Fifth Five

**South Cambridgeshire
Adopted Proposals Map
Published January 2010**

**Inset No. 65 Landbeach, Cambridge
Research Park and adjoining site
Map 1 of 1
Scale 1:5000**

Reproduced from the Ordnance Survey Mapping with the permission of the Controller of Her Majesty's Stationery Office © Crown Copyright. Unauthorised reproduction infringes Crown Copyright and may lead to prosecution or civil proceedings.

NO FURTHER COPIES MAY BE MADE. SCDC Licence 100022500 (2010)



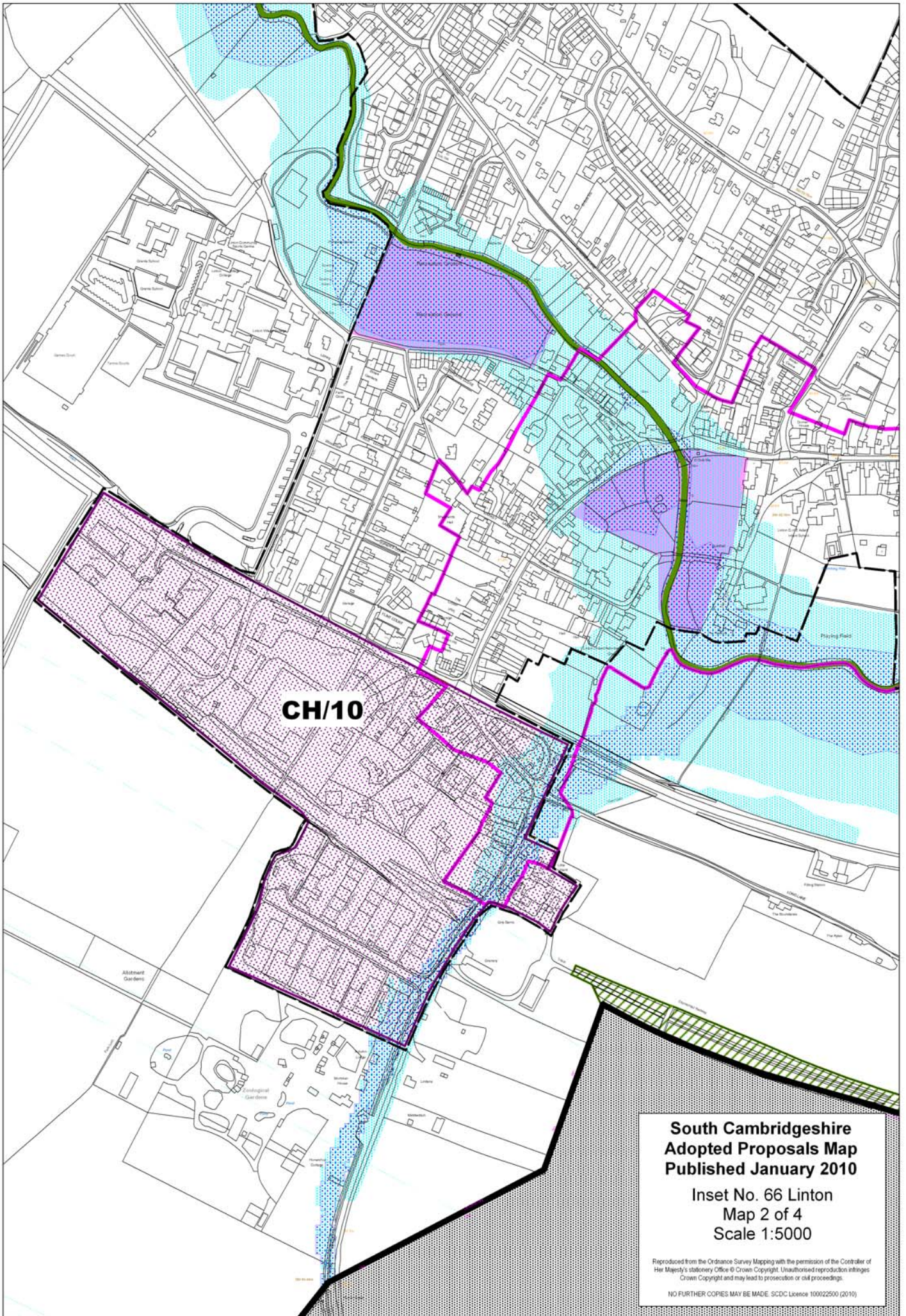
ET/3 (2I)

**South Cambridgeshire
Adopted Proposals Map
Published January 2010**

**Inset No. 66 Linton
Map 1 of 4
Scale 1:5000**

Reproduced from the Ordnance Survey Mapping with the permission of the Controller of Her Majesty's Stationery Office © Crown Copyright. Unauthorised reproduction infringes Crown Copyright and may lead to prosecution or civil proceedings.

NO FURTHER COPIES MAY BE MADE. SDC Licence 100022500 (2010)

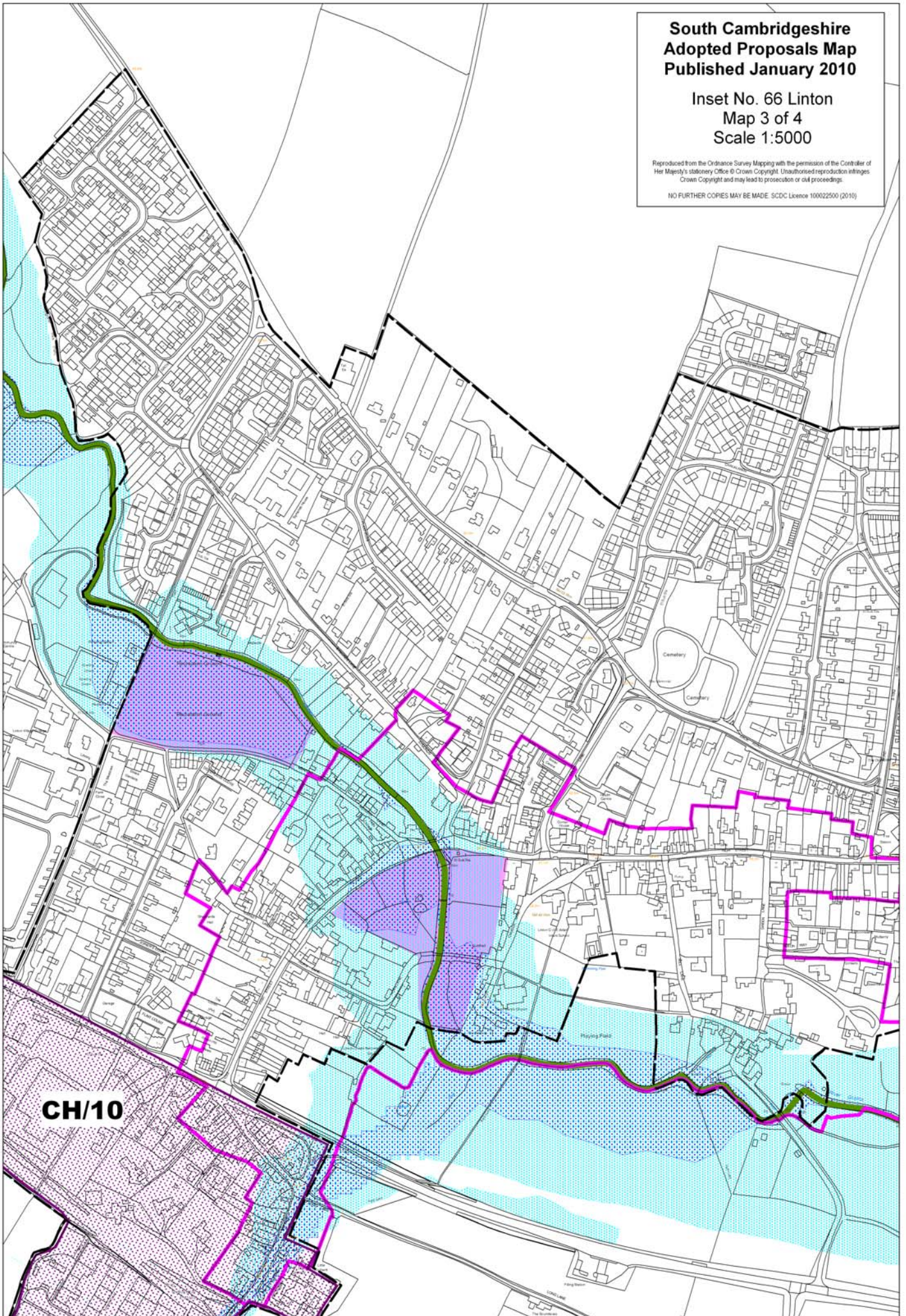


**South Cambridgeshire
Adopted Proposals Map
Published January 2010**

**Inset No. 66 Linton
Map 3 of 4
Scale 1:5000**

Reproduced from the Ordnance Survey Mapping with the permission of the Controller of Her Majesty's Stationery Office © Crown Copyright. Unauthorised reproduction infringes Crown Copyright and may lead to prosecution or civil proceedings.

NO FURTHER COPIES MAY BE MADE. SCDC Licence 100022500 (2010)



CH/10

**South Cambridgeshire
Adopted Proposals Map
Published January 2010**

**Inset No. 66 Linton
Map 4 of 4
Scale 1:5000**

Reproduced from the Ordnance Survey Mapping with the permission of the Controller of Her Majesty's Stationery Office © Crown Copyright. Unauthorised reproduction infringes Crown Copyright and may lead to prosecution or civil proceedings.

NO FURTHER COPIES MAY BE MADE. SICDC Licence 100022500 (2010)

